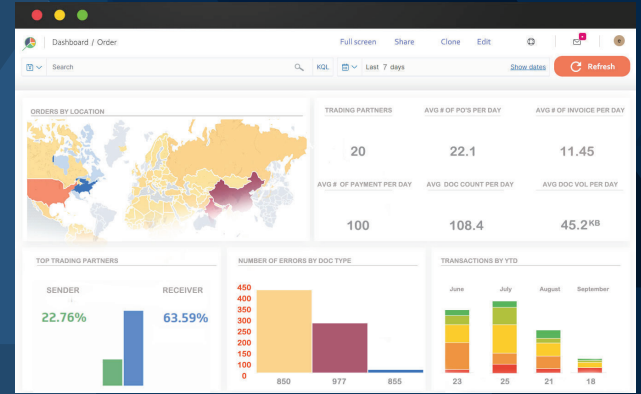


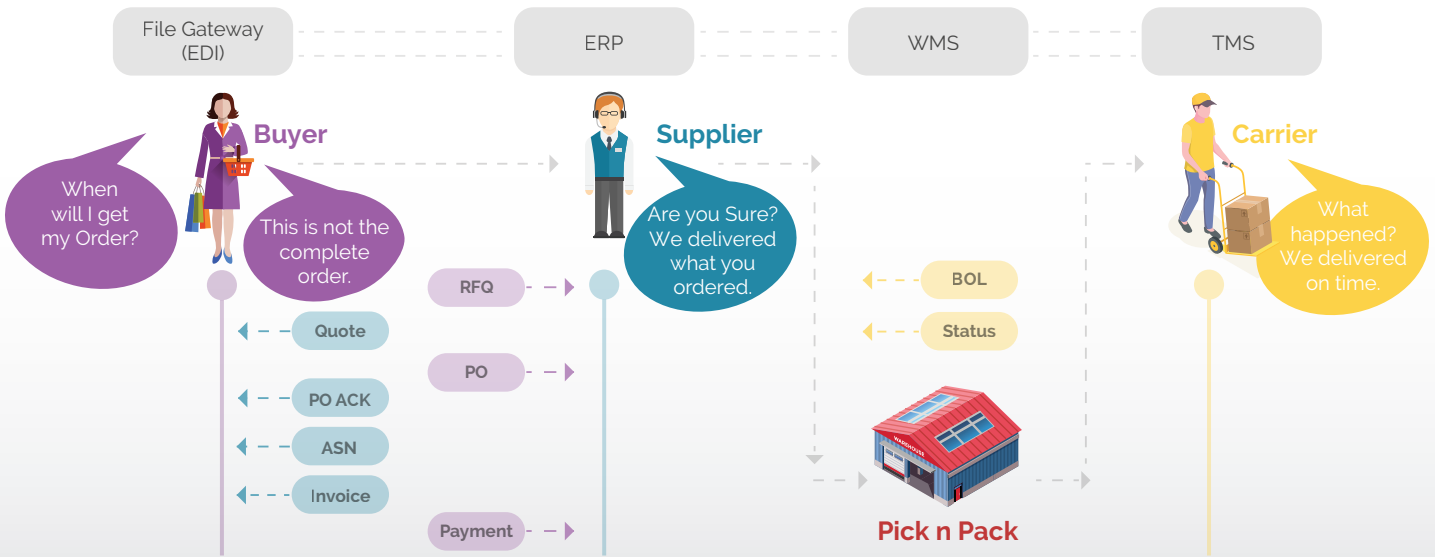
Turn Your Visibility into Actionable Insight

# Monitor Pro Framework for IBM Sterling B2B Integration

Royal Cyber Monitor Pro product capture key information pertaining to supply chain documents, correlates them into a single business context transaction flow and pinpoint issues.



**FREE 30 DAYS TRIAL**



## Product Highlights

- ⊗ On-Premise or Cloud deployment
- ⊗ Visualize the complex exchanges between you and your supply chain partners by correlating documents
- ⊗ Perform analytics, aggregate the insights and view business stats
- ⊗ Anomaly detection and business transaction volume prediction
- ⊗ Monitor system resources performance (CPU, Memory, I/O, Disk, etc.)
- ⊗ Intelligent notifications depending upon the business transaction status
- ⊗ Search to find any business transaction quickly
- ⊗ Easy integration with AI bots
- ⊗ Role-based user access

## Business Value

- ⊗ Get real-time status of an Order to Cash or Procure to Pay transaction
- ⊗ Visibility into EDI data to all line of business user groups like customer relations, fulfilment, procurement, logistics, accounts receivable and payable, eCommerce, order management, etc.
- ⊗ Customizable business dashboards
- ⊗ Capacity planning on system resources based on the business volume prediction
- ⊗ In-depth analysis of business transactions especially on anomalies.
- ⊗ Ask AI bot to get answers to your questions - in addition to seeing charts and graphs